

MONTHLY MEMBERSHIP PROGRESS REPORT

LOCATION INDIA

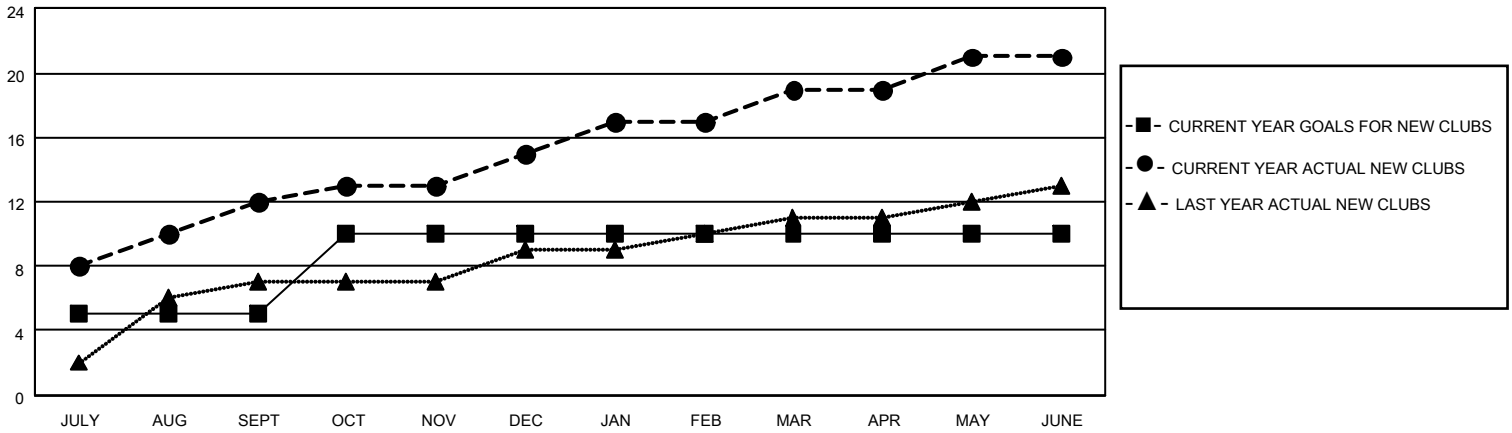
District 324 H

Results as of: 6/30/2023

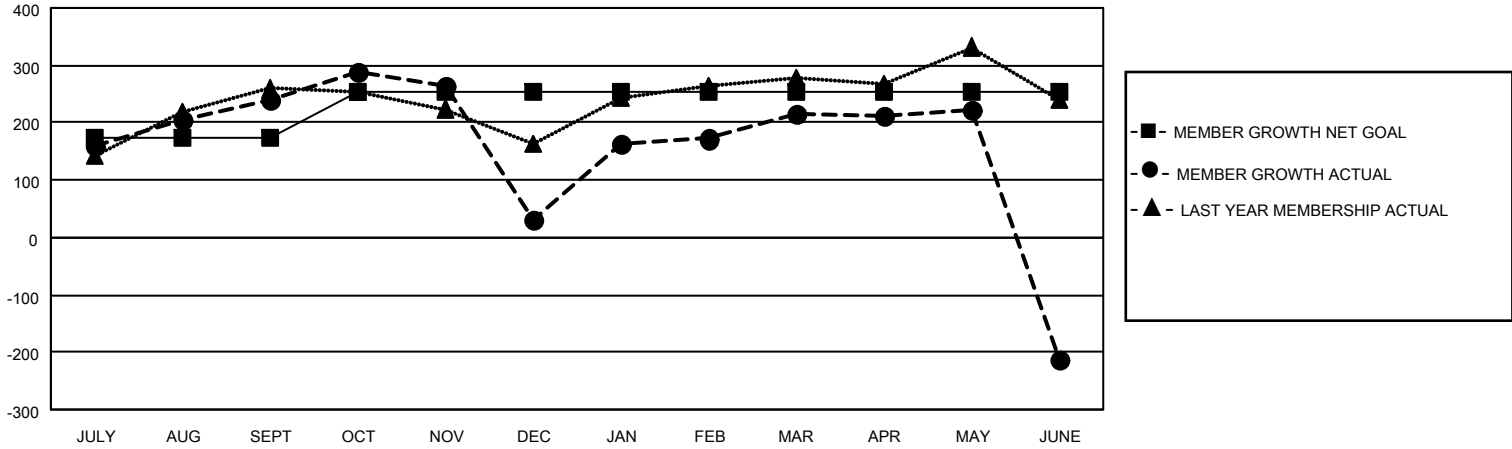
Clubs			
RESULTS FOR 2022-2023			
QUARTER	NEW CLUB GOAL	NEW CLUBS	DROPPED CLUBS
JULY/AUG/SEPT	5	12	1
OCT/NOV/DEC	5	3	6
JAN/FEB/MAR	0	4	1
APR/MAY/JUNE	0	2	3

Members			
RESULTS FOR 2022-2023			
QUARTER	MEMBER GROWTH NET GOAL	MEMBER GROWTH ACTUAL	DROPPED MEMBERS ACTUAL (including transfers)
JULY/AUG/SEPT	175	391	139
OCT/NOV/DEC	80	119	322
JAN/FEB/MAR	0	273	50
APR/MAY/JUNE	0	72	493

GOALS AND ACTUAL NEW CLUBS CUMULATIVE



GOALS AND ACTUAL MEMBERS CUMULATIVE



DROPPED CLUBS: 11	
DROPPED MEMBERS	
DECEASED	17
CLUB CANCELLED	226
OTHER	761
TOTAL	1,004

95 CLUBS OF 111 ADDED 1 OR MORE NEW MEMBERS

[CLICK HERE FOR CUMULATIVE MEMBERSHIP DATA](#)

<u>GENDER DISTRIBUTION</u>	
MALE	2,573 (85.11%)
FEMALE	449 (14.85%)
NON BINARY	1 (0.03%)
PREFER NOT TO ANSWER	0 (0.00%)
TOTAL FAMILY UNIT MEMBERS	
	736
FAMILY MEMBERS PAYING HALF DUES	
	428